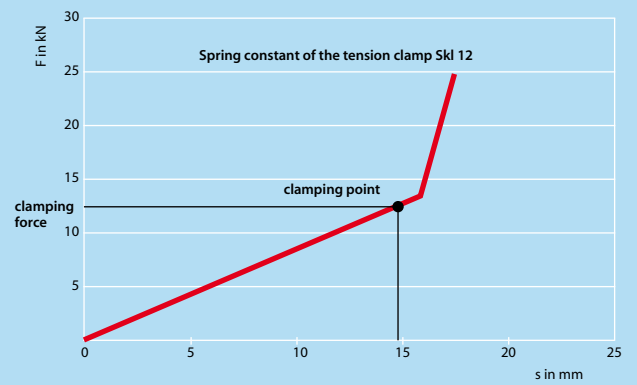
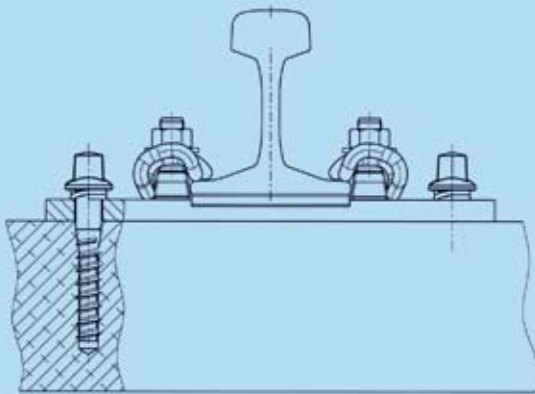


Fixing of the tension clamp:  
 Medium loop of the tension clamp should contact the rail foot.  
 Maximum allowed space between rail foot and medium loop: 2mm.  
 Guide line for the necessary momentum: 180 to 250 Nm



Unconnected delivery of the tension clamps



**SCHWIHAG AG**  
 Track and Switch Technology  
 Lebernstrasse 3, CH-8274 Tägerwilten  
 Phone +41(0)71 666 88 00 Fax +41(0)71 666 88 01  
 info@schwihag.com www.schwihag.com

..... INNOVATIVE TRACK AND SWITCH TECHNOLOGY .....



**RAIL FASTENING SYSTEM KS ON WOODEN  
SLEEPER WITH TENSION CLAMP SKL 12**