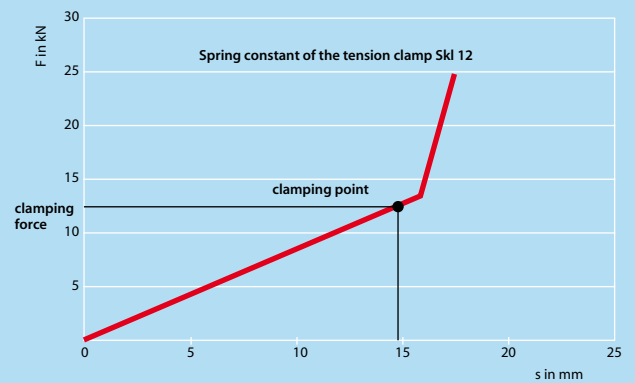
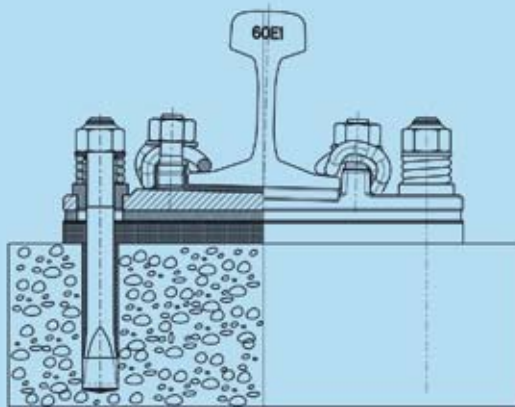


Fixing of the tension clamp:

Medium loop of the tension clamp should contact the rail foot.
 Maximum allowed space between rail foot and medium loop: 2mm.
 Guide line for the necessary momentum: 180 to 250 Nm

Fixing of the anchor bolt nut:

The helical compression spring must have an app. space between the coils of the spring of 1 mm to 2 mm. Guide line for the necessary momentum: 40 Nm



Unconnected delivery of the tension clamps



SCHWIHAG AG

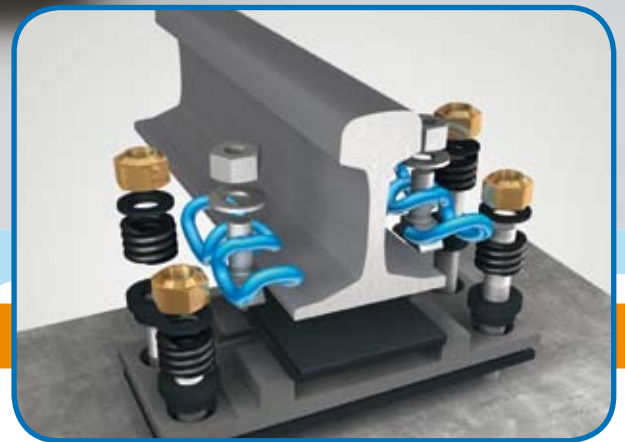
Track and Switch Technology

Lebernstrasse 3, CH-8274 Tägerwilten

Phone +41(0)71 666 88 00 Fax +41(0)71 666 88 01

info@schwihag.com www.schwihag.com

..... INNOVATIVE TRACK AND SWITCH TECHNOLOGY



**RAIL FASTENING SYSTEM AS SINGLE SUPPORT
POINT FOR SLAB TRACK ON RESILIENT
SUPPORTED BASE PLATE WITH TENSION
CLAMP SKL 12**