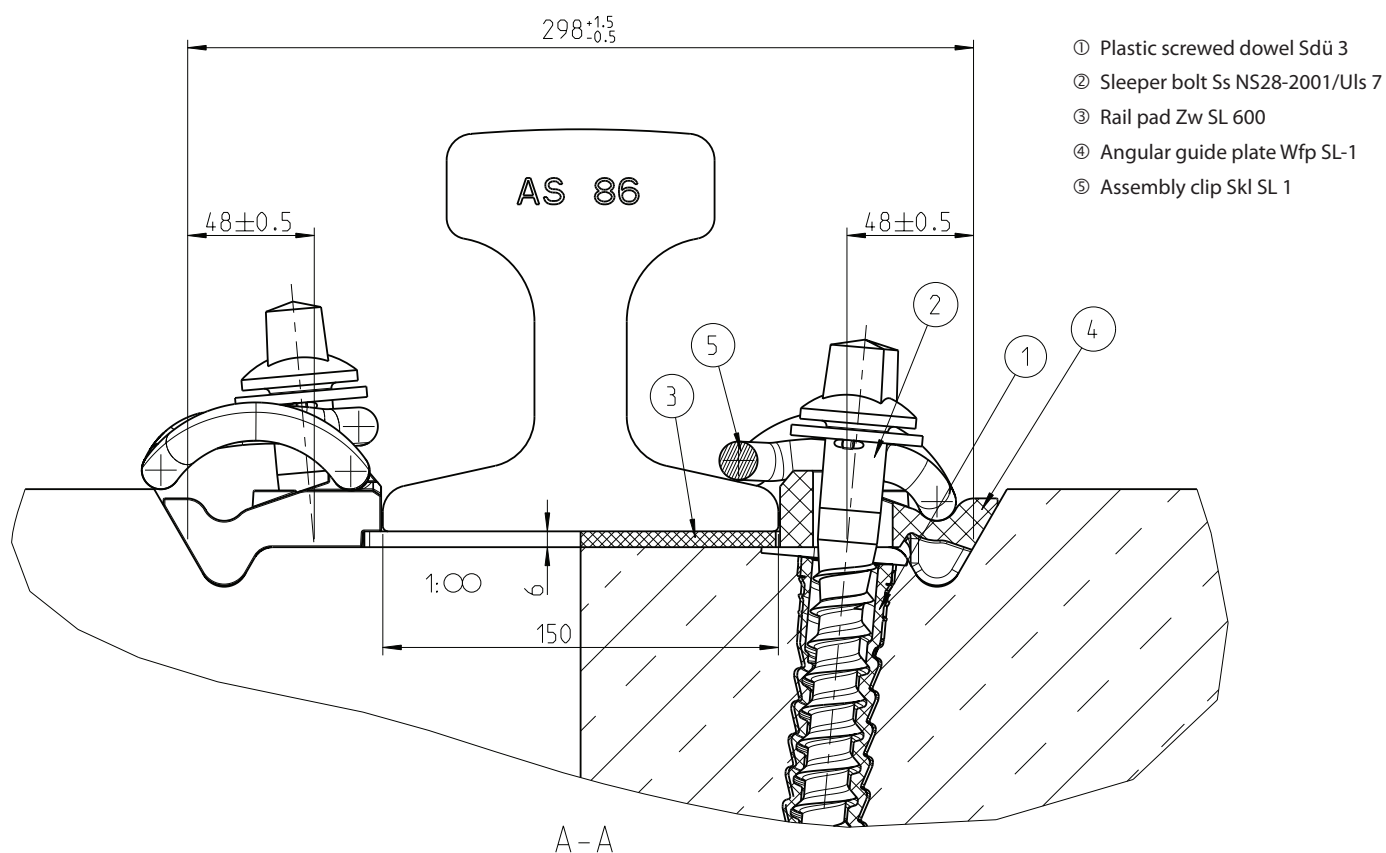
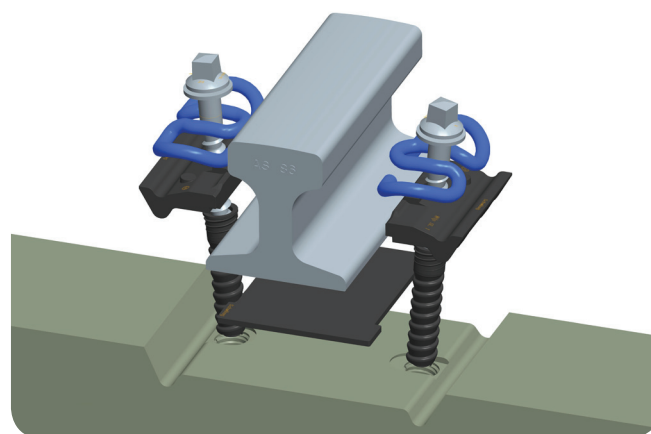


RAIL FASTENING SYSTEM W-SL-1 600 WITH ASSEMBLY CLIP SKI SL 1



Fastening type	direct, screwed
Assembly clip	Ski SL 1
Clamping force per assembly clip	> 12 kN
Vertical spring travel	ca. 15 mm
Vertical fatigue strength	2.5 mm
Horizontal fatigue strength (in transverse direction to rail in accordance with DBS 918 127)	at least +/- 0.4 mm
Horizontal fatigue strength (in longitudinal direction to rail in accordance with DBS 918 127)	at least +/- 0.4 mm
Tipping protection	exists
Static stiffness of the rail pad (EVA)	ca. 600-800 kN/mm
Creep resistance	> 9 kN



The rail fastening System W-SL-1 600 fulfils all requirements of EN 13481-2 - „Performance requirements for fastening systems - Part 2: Fastening systems for concrete sleepers“